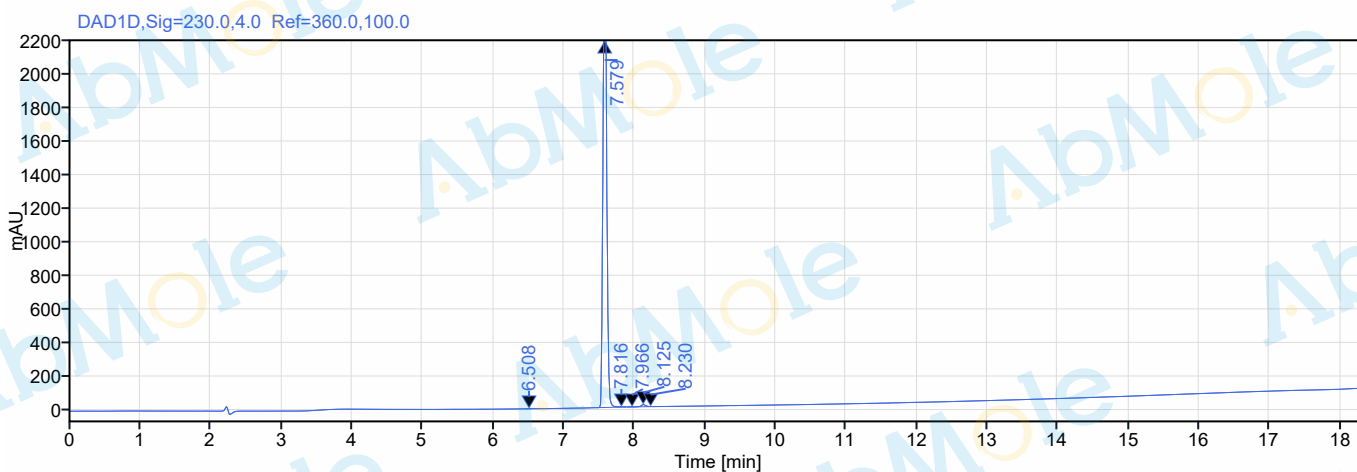




**Sample name:** M10311-Danuglipron (PF-06882961)-02 **Injection date:**  
**Instrument:** A010 **Location:**  
**Inj. volume:** 2 **Type:**  
**Acq. method:** HPLC **Sample amount:**  
**Processing method:**  
**Manually modified:**



**Signal:** DAD1D,Sig=230.0,4.0 Ref=360.0,100.0

RT [min]	Type	Width [min]	Area	Height	Area%
6.508	MM m	0.09	1.50	0.51	0.02
7.579	BV	0.30	9927.31	2725.86	99.33
7.816	VB	0.10	7.15	1.76	0.07
7.966	MM m	0.10	0.76	0.23	0.01
8.125	BM m	0.21	55.84	12.99	0.56
8.230	MM m	0.06	1.80	0.75	0.02